



GMV A/S - v9

# Winlet

Effective and intelligent glazing-  
and cladding robots for windows,  
glass, and other airtight material.

 **GMV**  
Cranes and Handling



# What is a Winlet?

**Faster, safer, and smarter glass and window installations.**

The Winlet products consists of a series of self-propelled vacuum lifts using vacuum and hydraulics to lift and handle sheet glass, windows, and other airtight material.

All Winlets have off-road wheel drive on the front axle and movements of the load is hydraulically actuated.

## GLAZING ROBOTS:

<b>Winlet</b> 1000 Crawler	<b>Page</b> 4
<b>Winlet</b> 1000 Crawler ER	<b>Page</b> 6
<b>Winlet</b> 1000	<b>Page</b> 8
<b>Winlet</b> 785	<b>Page</b> 10
<b>Winlet</b> 600	<b>Page</b> 12
<b>Winlet</b> 575	<b>Page</b> 14
<b>Winlet</b> 575TH	<b>Page</b> 16
<b>Winlet</b> 400	<b>Page</b> 18
<b>Winlet</b> 375	<b>Page</b> 20

## PICK & CARRY CRANES:

<b>Winlet</b> Lasius 1,5t	<b>Page</b> 22
<b>Winlet</b> Lasius 1t	<b>Page</b> 24
<b>Winlet</b> Lasius 550	<b>Page</b> 26

<b>WINLET ACCESSORIES</b>	<b>Page</b> 28
---------------------------	----------------

# Why should you invest in a Winlet?



Manual installations of glass and windows might seem like the cheapest solution compared to investing in a glazing robot.

However, manual installations require a large workforce in order to lift and handle the glass. If you also consider the high risks of injuries and material damage, the costs will long surpass the investment you will make in a glazing robot.



With a Winlet, glass installation is possible with just one operator.

All Winlet models are fully hydraulic which ensures the robustness, speed and power required on a construction site.

The hydraulic fine lift and side shift on Winlet ensures that the installation is carried out easily and precisely - every time!



Safety is the most important feature on a Winlet. The Winlet computer is always monitoring all functions including position of the lifting arm and capacity limits. This is to ensure safety at all times during use.

All Winlets are equipped with a safety switch, an emergency stop and emergency lowering of the hydraulics is always possible on a Winlet.



When it comes to safe and effective glass and window installation there is a much smarter way. - It's called a Winlet!

**Winlet - Faster, Safer, Smarter!**



# Winlet 1000 Crawler

## Crawled traction and low ground pressure

Winlet Crawler Bi-Leveling can operate in all types of terrain including stairs. With this Winlet you get maximum maneuverability and precision even in the narrowest spaces, with a minimum of ground pressure - and without any kind of outriggers needed at any time.

## Dynamic leveling

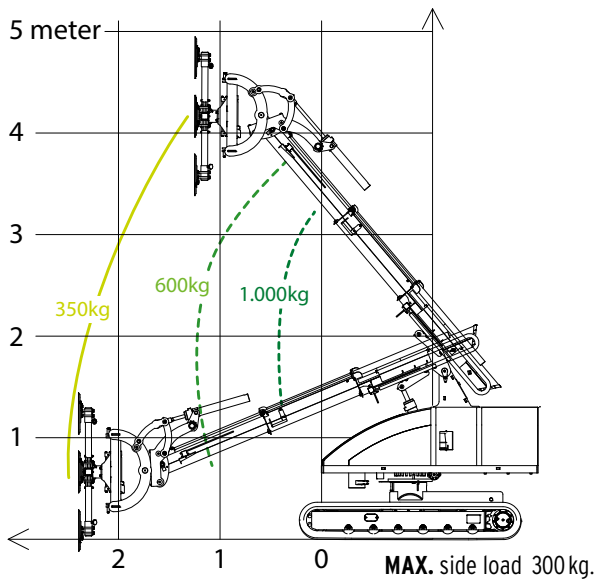
The leveling of the manipulator is completely automatic when using the Dynamic Leveling System -even on slopes or uneven surfaces.

Winlet Crawler Bi-Leveling will automatically adjust both on longitudinal slopes until  $15^{\circ}$  (27%) and on lateral slopes until  $14^{\circ}$  (25%). Always ensuring a safe and effective transportation or installation.

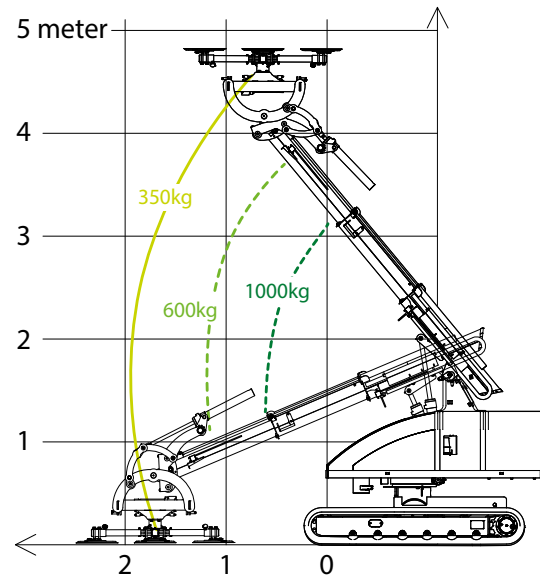


# Winlet 1000 Crawler

## REACH DIAGRAM

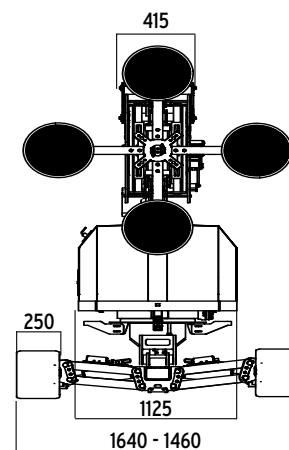
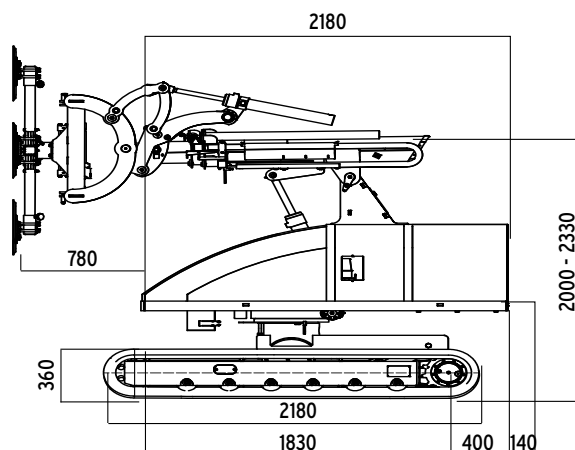


## PICKUP AND PLACE DIAGRAM



## SPECIFICATIONS\*

EXTERNAL LENGTH	2.830 MM	MAX REACH - Carrier tilted forward	2.600 MM
EXTERNAL WIDTH	1.460 - 1.640 MM	HYDRAULIC SIDE SHIFT	75 MM
MAX LIFTING CAPACITY	1.000 KG	FINE LIFT ON ARM	200 MM
MAX LIFTING HEIGHT - Raised carrier	4.500 MM	TILT FUNCTION OF THE FRONT - Horizontal arm	BACK: 43° FORTH: 88°
MAX LIFTING HEIGHT - Lowered carrier	4.170 MM	HYDRAULIC ROTATION	360 °
TOTAL WEIGHT	2.850 KG	SUCTION CUPS	4 x ø410 MM
MAX OVERHEAD INSTALLATION - Raised carrier	5.100 MM	BATTERIES	48V, 420AH
MAX OVERHEAD INSTALLATION - Lowered carrier	4.770 MM	MAX SPEED	0- 2,2 KPH
MAX REACH - No tilt on carrier	2.580 MM		



\* The dimensions are indicative and may vary +/- 10mm. The photographs and/or drawings in this document are for illustrative purposes only.

WITH  
EXTENDED  
REACH!

# Winlet 1000 Crawler ER

## Winlet Crawler with extended reach!

Winlet 1000 Crawler ER is an upgraded version of our tracked glazing robot. This version has an extended telescopic arm reaching a maximum horizontal lifting height of just over 6 meters!

As the original Crawler, it can operate in all types of terrain including stairs ensuring maximum maneuverability and precision even in the narrowest spaces, with a minimum of ground pressure - and without any kind of outriggers needed at any time.

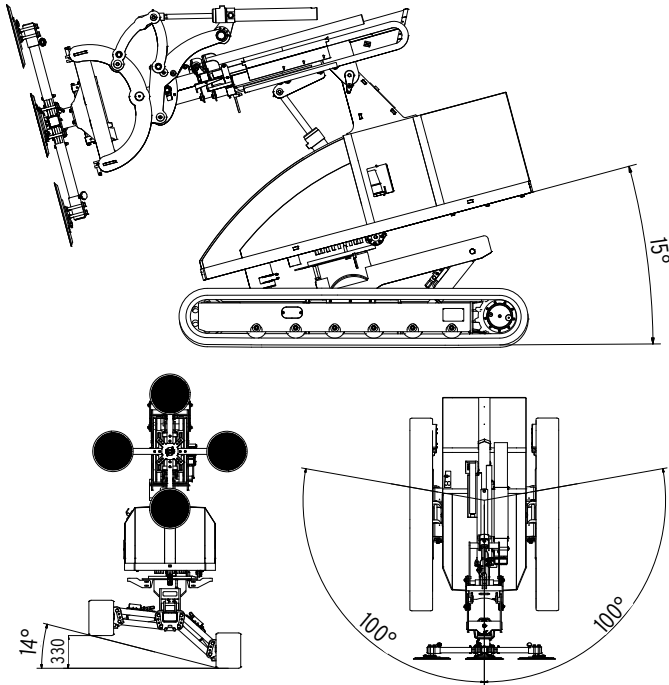
## Dynamic leveling

The leveling of the manipulator is completely automatic when using the Dynamic Leveling System - even on slopes or uneven surfaces.

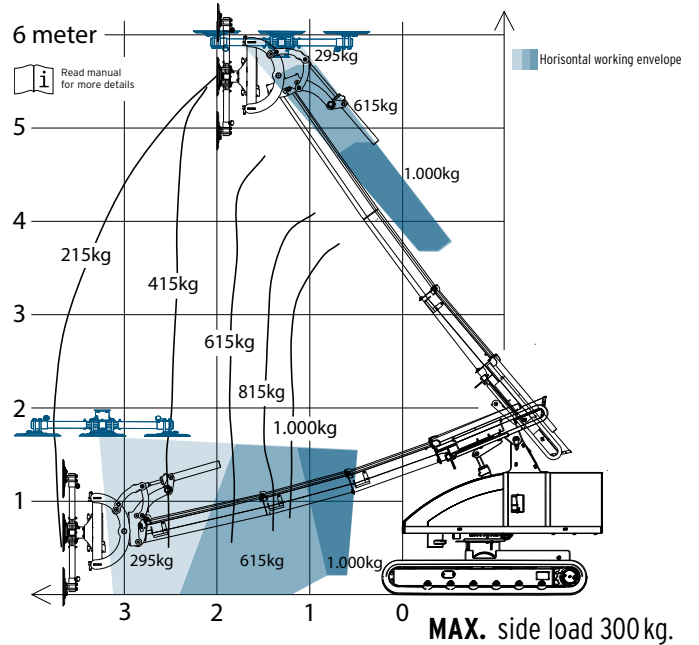
Winlet Crawler Bi-Leveling will automatically adjust both on longitudinal slopes until 15° (27%) and lateral slopes until 14° (25%) at the same time, always ensuring a safe and effective transportation or installation.



# Winlet 1000 Crawler ER

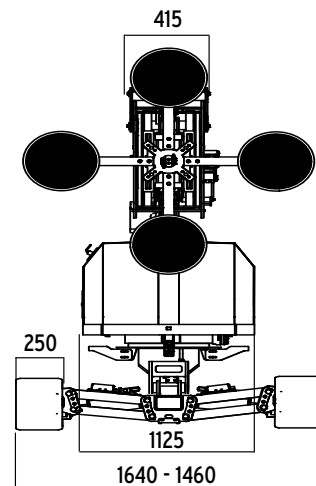
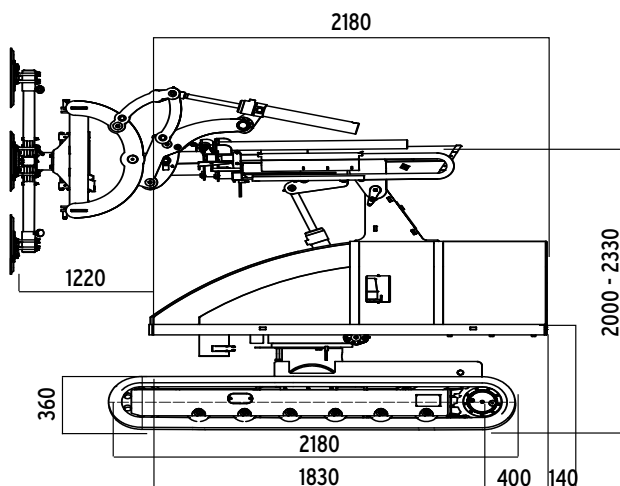


## MAX. LOAD/REACH KG



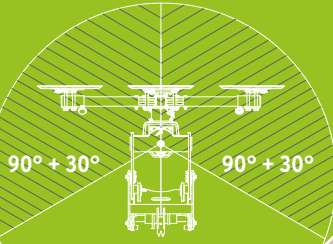
## SPECIFICATIONS\*

EXTERNAL LENGTH	3.530 MM	MIN DISTANCE FRONT TO SUCTION CUP	1.020 MM
EXTERNAL WIDTH	1.460 - 1.640 MM	MAX DISTANCE FRONT TO SUCTION CUP	3.780 MM
EXTERNAL HEIGHT	2.120 MM	HYDRAULIC SIDE SHIFT	75 MM
TOTAL WEIGHT	2.980 KG	HYDRAULIC FINE LIFT ON ARM	200 MM
MAX LIFTING CAPACITY	1.000 KG	HYDRAULIC ROTATION	360°
MAX VERTICAL LIFTING HEIGHT - Raised carrier	5.480 MM	TILT FUNCTION OF THE FRONT - Horizontal arm	BACK: 43° FORTH: 88°
MAX VERTICAL LIFTING HEIGHT - Lowered carrier	5.280 MM	SUCTION CUPS	4 x ø410MM
MAX HORIZONTAL LIFTING HEIGHT - Raised carrier	6.050 MM	BATTERIES	48V, 420AH
MAX HORIZONTAL LIFTING HEIGHT - Lowered carrier	5.850 MM	MAX SPEED	0- 2,2 KPH
MAX HORIZONTAL LIFTING HEIGHT - Suction cups down, lowered carrier	1.540 MM		



\* The dimensions are indicative and may vary +/- 10mm. The photographs and/or drawings in this document are for illustrative purposes only.

Optional: Full  
Capacity Hydraulic  
Head Slewing



Available with:  
PSAC - Proportional Single Axis Control  
MAC - Multi Axis Control  
Radio Remote - Proportional Multi Axis Control

# Winlet 1000

The glazing robot with a 1 tonne capacity

Winlet 1000 can lift up to 1.000 kg but still has the ability to work across rough terrain. Weighing just 1.816 kg with full counterweights, it is also designed for operation across low load bearing floors.

## Maximum control

An intelligent gyroscopic hydraulic system makes sure the load stays in the same position when an element is lifted with the main arm.

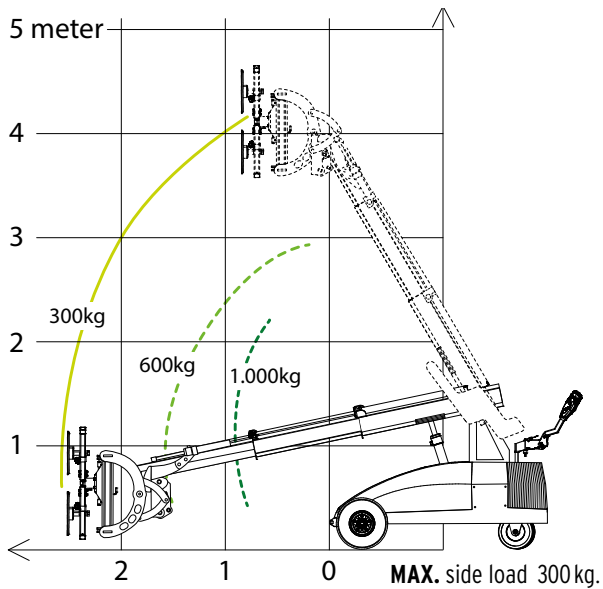
The glazing robot can also install glass panels directly overhead up to a height of 4.1 meters, making it ideal for installing glazed cupolas and roofs.



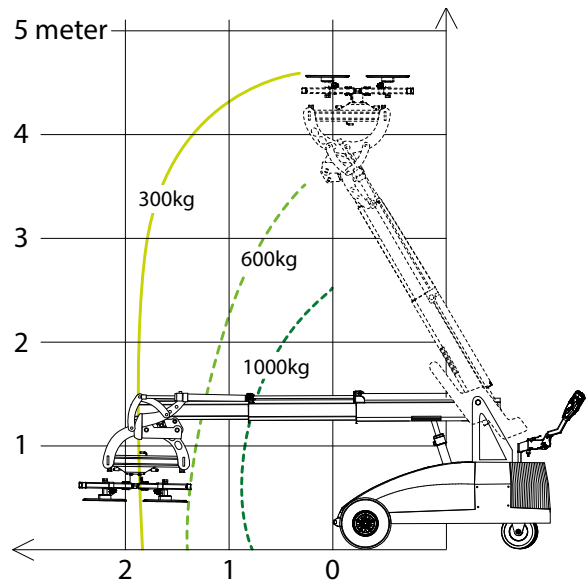


# Winlet 1000

## REACH DIAGRAM

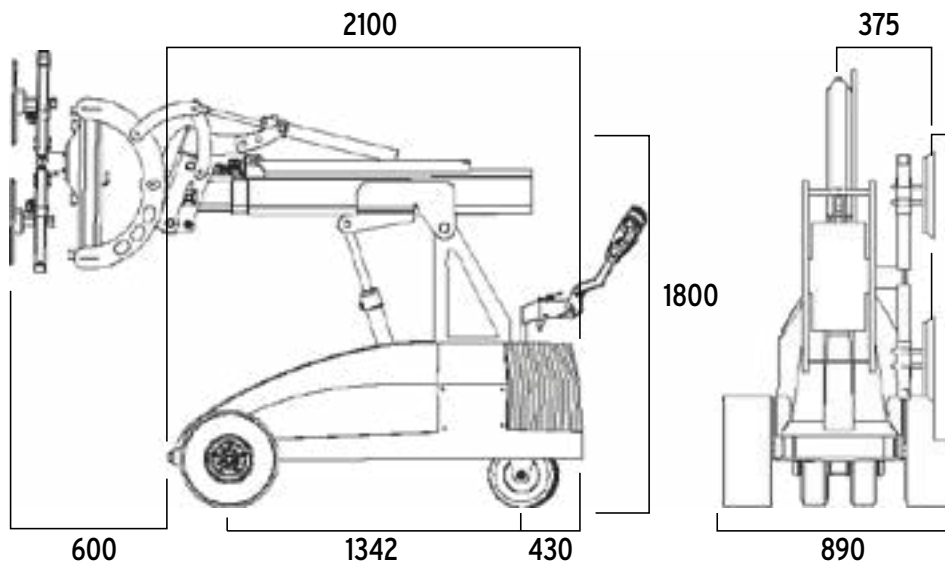


## PICKUP AND PLACE DIAGRAM



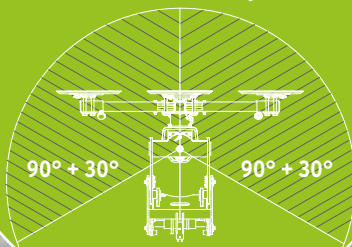
## SPECIFICATIONS\*

EXTERNAL LENGTH	2.100 MM	MAX LIFTING HEIGHT - to center of lifting yoke	4.100 MM
EXTERNAL WIDTH	890 MM	HYDRAULIC SIDE SHIFT	75 MM
MAX LIFTING CAPACITY	1.000 KG	HYDRAULIC FINE LIFT ON ARM	200 MM
MAX LOAD AT MAX EXTENSION	300 KG	HYDRAULIC HEAD SLEWING	2 X 30 °
MAX SIDE MOUNTED LOAD	300 KG	TILT FUNCTION OF THE FRONT - Horizontal arm	BACK: 43° FORTH: 88°
TOTAL WEIGHT - Excl. counterweights	1.365 KG	HYDRAULIC ROTATION	360 °
TOTAL WEIGHT - Incl. counterweights	1.816 KG	SUCTION CUPS	4 x ø410 MM
EXTENSION MIN/MAX - Front bumper to suction cup	600 MM / 2.500 MM	BATTERIES	2 X 150 AH
LIFTING HEIGHT MIN/MAX - Horizontal cups down	0 MM / 950 MM	MAX SPEED	0-5 KPH
LIFTING HEIGHT MIN/MAX - Horizontal cups up	3.080 MM / 4.650 MM		



\* The dimensions are indicative and may vary +/- 10mm. The photographs and/or drawings in this document are for illustrative purposes only.

Optional: Full  
Capacity Hydraulic  
Head Slewing



Available with:  
PSAC - Proportional Single Axis Control  
MAC - Multi Axis Control  
Radio Remote - Proportional Multi Axis Control.

# Winlet 785

## Superior lifting capacity and reach

Winlet 785 glazing robot has an impressive reach while the unique double extension of the lifting arm makes the machine extremely compact during transportation.

The glazing robot has a load capacity of 785 kg and has 6 hydraulic functions with both lateral/vertical movement and rotation being hydraulically actuated.

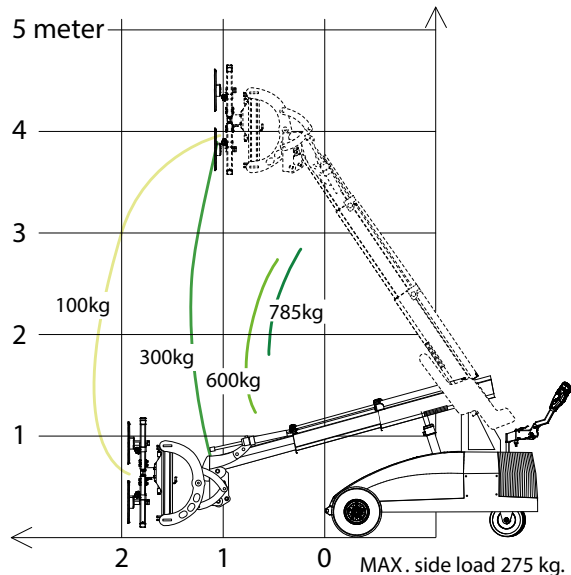
## Maximum safety

Winlet 785 is equipped with a unique safety monitoring system which means that the position of the machines front is always known and is communicated to the Winlet controller, thereby avoiding dangerous situations.

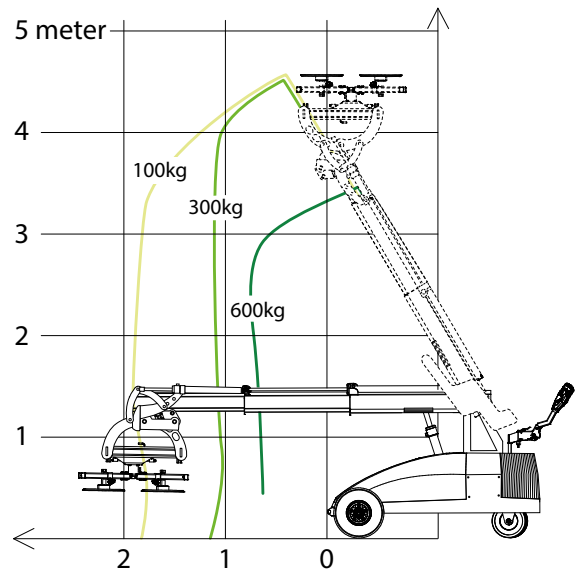


# Winlet 785

## REACH DIAGRAM

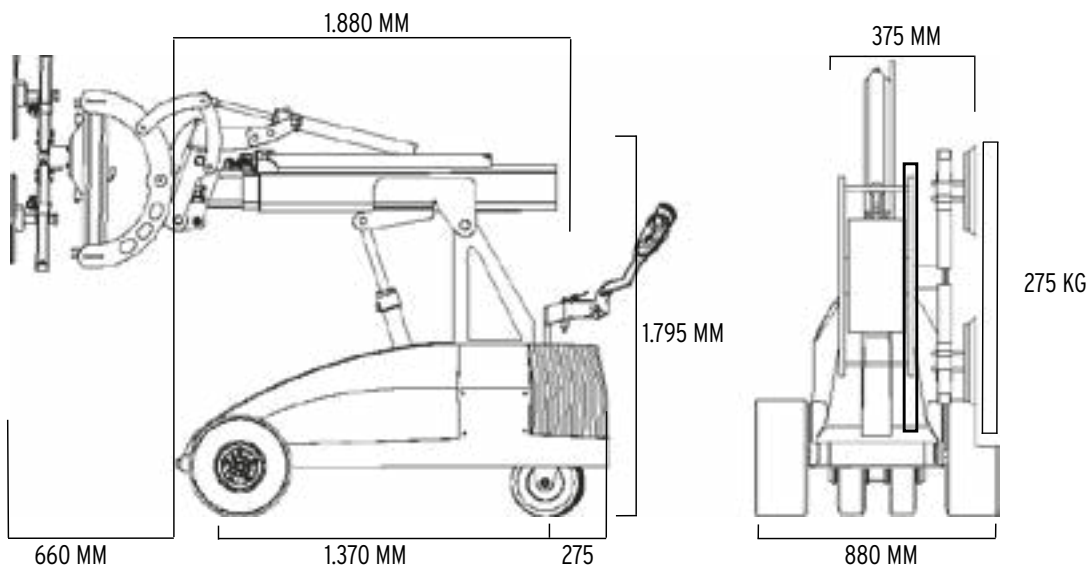


## PICKUP AND PLACE DIAGRAM



## SPECIFICATIONS\*

EXTERNAL LENGTH	1.880 MM	MAX LIFTING HEIGHT - to center of lifting yoke	3.970 MM
EXTERNAL WIDTH	880 MM	HYDRAULIC SIDE SHIFT	75 MM
MAX LIFTING CAPACITY	785 KG	HYDRAULIC FINE LIFT ON ARM	200 MM
MAX LOAD AT MAX EXTENSION	100 KG	HYDRAULIC HEAD SLEWING	2 X 30°
MAX SIDE MOUNTED LOAD	275 KG	TILT FUNCTION OF THE FRONT - Horizontal arm	BACK: 42° FORTH: 79°
TOTAL WEIGHT excl. counterweights	1.142 KG	HYDRAULIC ROTATION	360°
TOTAL WEIGHT incl. counterweights	1.422 KG	SUCTION CUPS	4 x ø410 MM
EXTENSION MIN/MAX - Front bumper to suction cup	660 MM / 2.500 MM	BATTERIES	2 X 150 AH
LIFTING HEIGHT MIN/MAX - Horizontal cups down	0 MM / 950 MM	MAX SPEED	0-5 KPH
LIFTING HEIGHT MIN/MAX - Horizontal cups up	3.080 MM / 4.470 MM		



\* The dimensions are indicative and may vary +/- 10mm. The photographs and/or drawings in this document are for illustrative purposes only.



# Winlet 600

## Minimum space - Maximum capacity

With a load capacity of 600 kg. Winlet 600 is designed to handle heavier windows, sheet glass and other airtight material in the construction industry.

The Winlet 600 has 4 hydraulic functions and a vacuum swivel.

## High precision and power

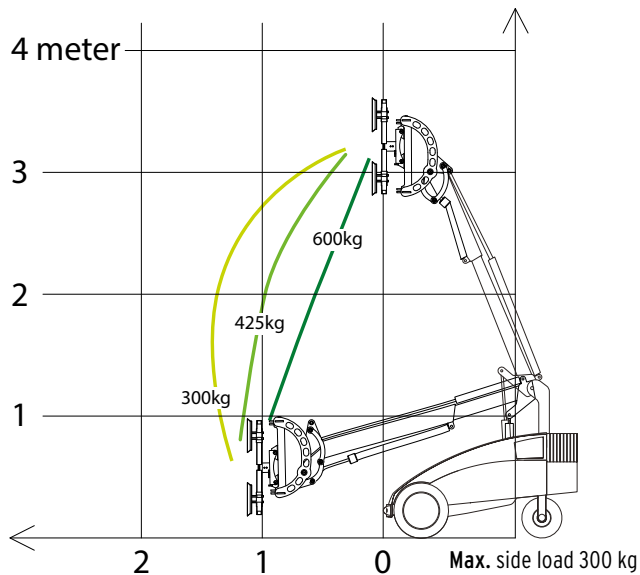
The unique adjustment options for the suction cups and the linear movements at the front make the Winlet 600 an obvious choice for installation jobs where precision is important, while enabling items of up to 600 kg to be handled without back strain.

The powerful wheel drive makes Winlet 600 ideal not only indoors but also in outdoor terrain.

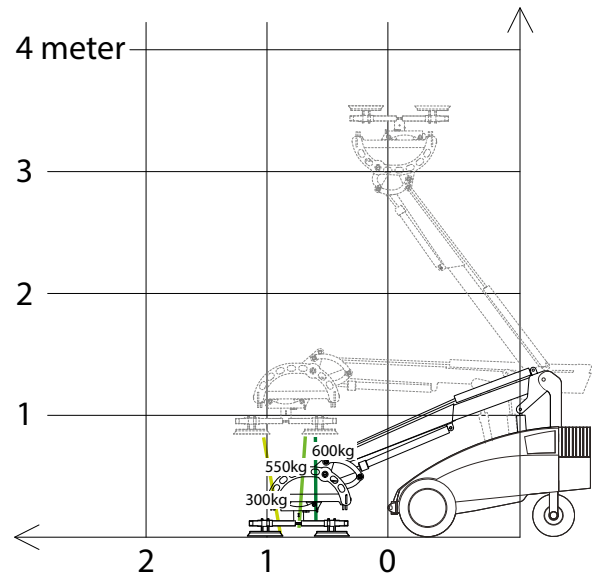


# Winlet 600

## REACH DIAGRAM

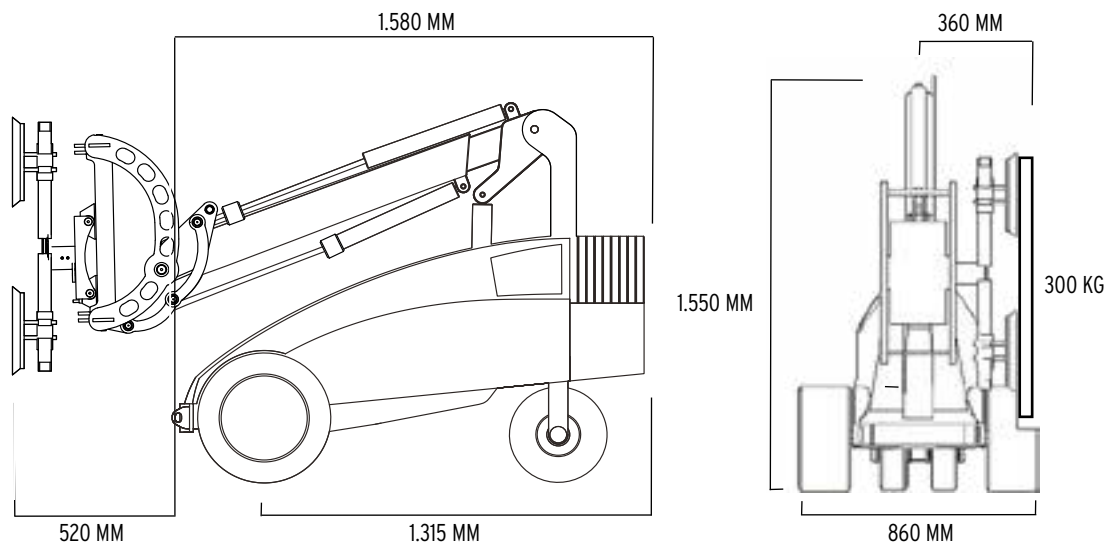


## PICKUP AND PLACE DIAGRAM



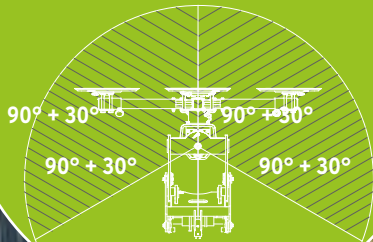
## SPECIFICATIONS\*

EXTERNAL LENGTH	1.580 MM	MAX LIFTING HEIGHT - to center of lifting yoke	3.300 MM
EXTERNAL WIDTH	860 MM	SIDE SHIFT	90 MM
MAX LOAD	600 KG	HYDRAULIC FINE LIFT ON ARM	190 MM
MAX LOAD AT MAX EXTENSION	300 KG	TILT FUNCTION OF THE FRONT - Horizontal arm	BACK: 30° FORTH: 86°
MAX SIDE MOUNTED LOAD	300 KG	ROTATION	ENDLESS
TOTAL WEIGHT excl. counterweights	865 KG	SUCTION CUPS	4 X Ø360 MM
TOTAL WEIGHT incl. counterweights	1.060 KG	BATTERIES	2 X 95 AH
EXTENSION MIN/MAX- front bumper to suction cup	600 MM / 1300 MM	MAX SPEED	0-5 KPH



\* The dimensions are indicative and may vary +/- 10mm. The photographs and/or drawings in this document are for illustrative purposes only.

Optional: Full  
Capacity Hydraulic  
Head Slewing



Available with:  
PSAC - Proportional Single Axis Control  
MAC - Multi Axis Control  
Radio Remote - Proportional Multi Axis Control.

# Winlet 575

## Minimum space - Fully hydraulic

Winlet 575 is the smallest of our fully hydraulic glazing robots with a load capacity of 575 kg.

Winlet 575 has 6 hydraulic functions, with both lateral/vertical movement and rotation being hydraulically triggered.

The movements of the front of Winlet 575 are 100% linear, which is required by the professional users when, for example, installing glass in prefabricated frames.

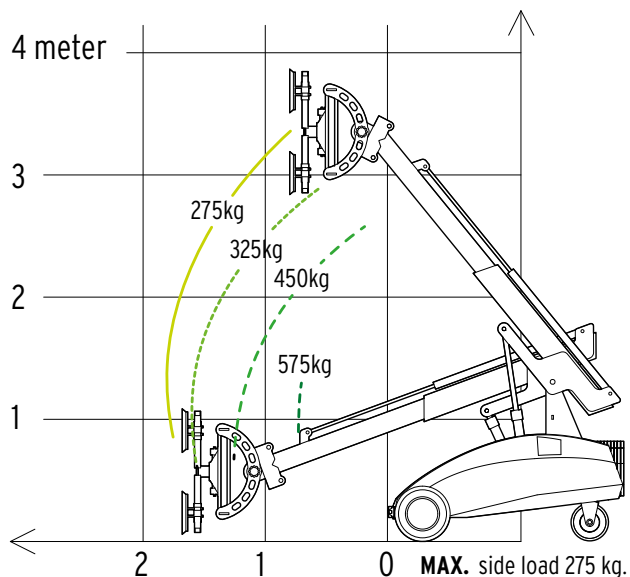
## Safe and precise

Winlet 575 has a unique "gyro function", which ensures that the glass is automatically maintained in the same position when an element is lifted with the main arm.

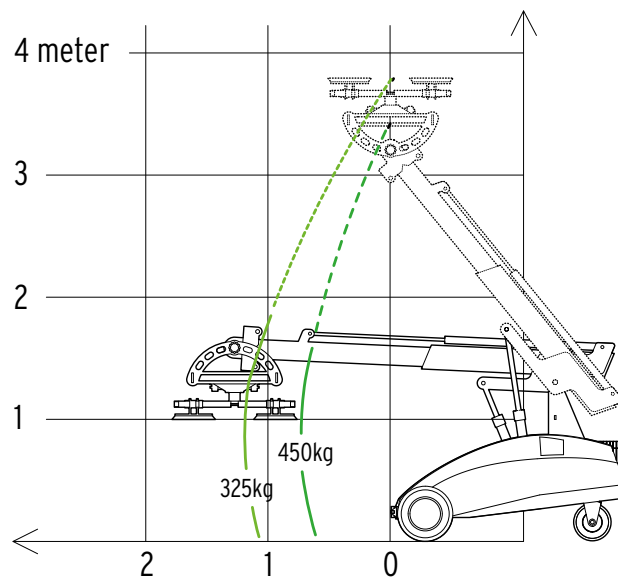


# Winlet 575

## REACH DIAGRAM

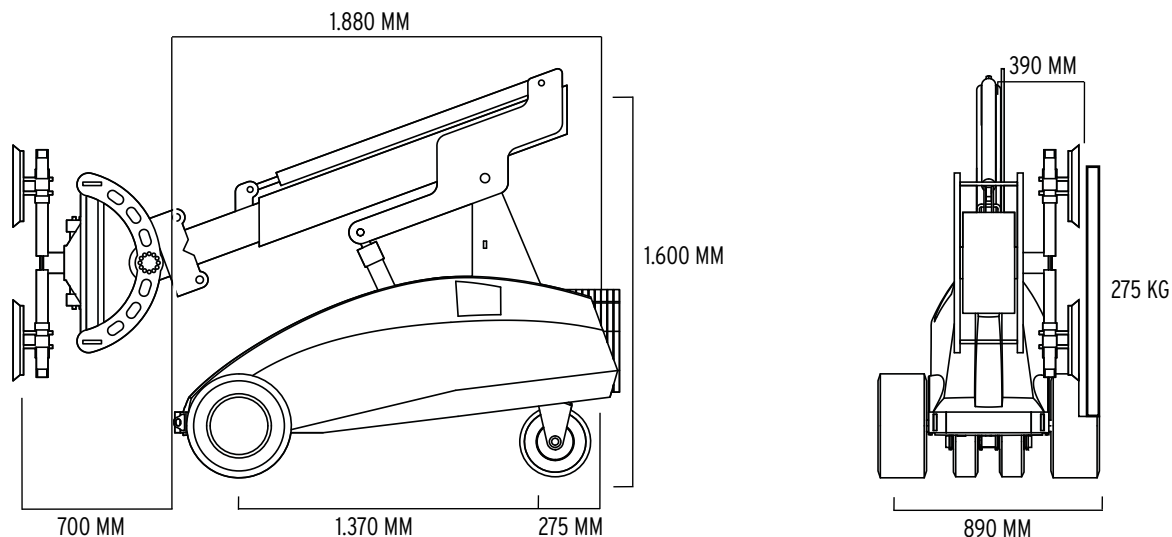


## PICKUP AND PLACE DIAGRAM

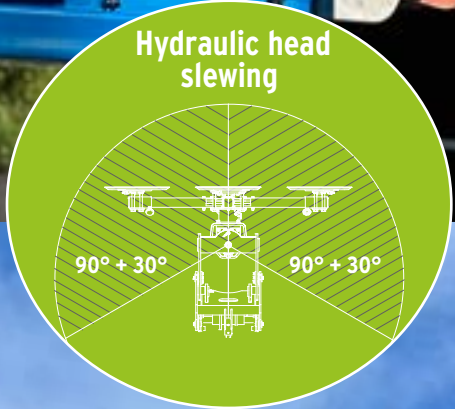


## SPECIFICATIONS\*

EXTERNAL LENGTH	1.880 MM	MAX LIFTING HEIGHT - To center of lifting yoke	3.600 MM
EXTERNAL WIDTH	890 MM	HYDRAULIC SIDE SHIFT	75 MM
MAX LOAD	575 KG	HYDRAULIC FINE LIFT ON ARM	200 MM
MAX LOAD AT MAX EXTENSION	275 KG	HYDRAULIC HEAD SLEWING	2 X 30 °
MAX SIDE MOUNTED LOAD	275 KG	HYDRAULIC ROTATION	360 °
TOTAL WEIGHT excl. counterweights	1.025 KG	TILT FUNCTION OF THE FRONT - Horizontal arm	BACK: 60° FORTH: 86°
TOTAL WEIGHT incl. counterweights	1.300 KG	SUCTION CUPS	4 X Ø350 MM
EXTENSION MIN/MAX - Front bumper to suction cup	700 MM / 1.800 MM	BATTERIES	2 X 150 AH
LIFTING HEIGHT MIN/MAX- Horizontal cups down	0 MM / 1.170 MM	MAX SPEED	0-5 KPH
LIFTING HEIGHT MIN/MAX- Horizontal cups up	2.700 MM / 3.900 MM		



\* The dimensions are indicative and may vary +/- 10mm. The photographs and/or drawings in this document are for illustrative purposes only.



# Winlet 575TH

## Height-Defying Window Installation

Winlet 575TH is used for window installation in buildings where the standard Winlet cannot be utilized due to height restrictions or challenging site conditions, making maneuverability difficult.

Winlet 575TH is available with Quick Shift, specifically designed for your loading machine. Additionally, it features its own hydraulic system, battery and remote control, operating independently from the loading machine.

## Maximum capacity and safety

Winlet 575TH has an impressive lifting capacity of 575 kg and a 2-circuit vacuum system, ensuring exceptional safety during installations.

Winlet 575TH is equipped with 7 hydraulic functions:

1. Lifting of arm
2. Extension of arm
3. Tilt function
4. Fine lift
5. Side shift
6. 30° head slewing
7. 360° rotation



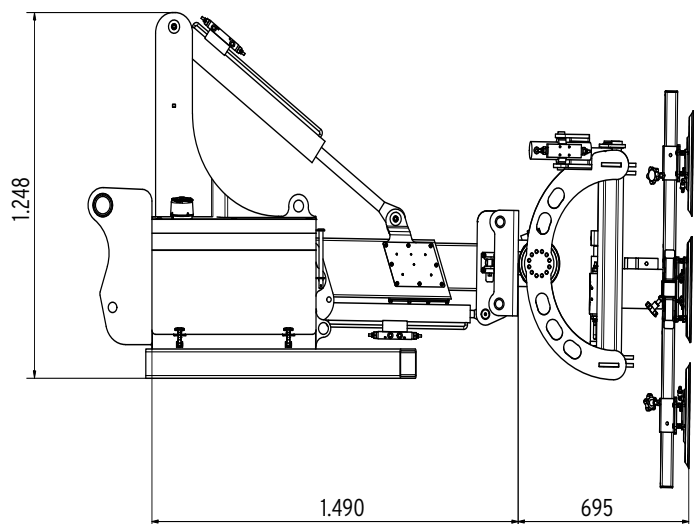
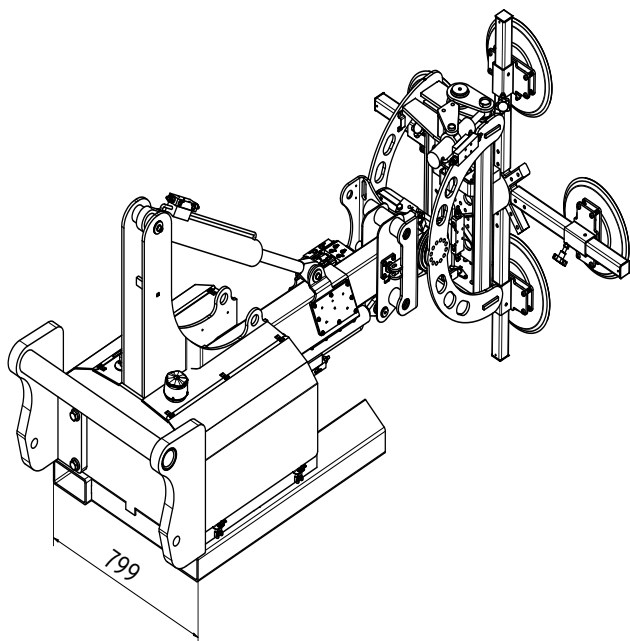


# Winlet 575TH



## SPECIFICATIONS\*

EXTERNAL LENGTH	2.185 MM	HYDRAULIC FINE LIFT	200 MM
EXTERNAL WIDTH	799 MM	HYDRAULIC ROTATION	360 °
MAX LOAD	575 KG	HYDRAULIC HEAD SLEWING	2 X 30 °
TOTAL WEIGHT	781 KG	TILT FUNCTION OF THE FRONT - Horizontal arm	BACK: 60° FORTH: 86°
MAX EXTENSION OF THE ARM	400 MM	SUCTION CUPS	4 X Ø410 MM
HYDRAULIC SIDE SHIFT	75 MM	BATTERIES	2 X 60 AH



\* The dimensions are indicative and may vary +/- 10mm. The photographs and/or drawings in this document are for illustrative purposes only.



# Winlet 400

## Build a glazing robot that fits your tasks exactly

The Winlet 400 series is a range of state-of-the-art glazing robots lifting up to 500 kg. and designed to meet all needs during window- and glass installations. In this series of glazing robots, the vital parts of the machine are customized to make sure you get exactly the Winlet 400 you need for your projects.

### 4 main configurations

Over time we have learned that adapting four main parts of the glazing robot to a specific task, will maximize its performance dramatically.


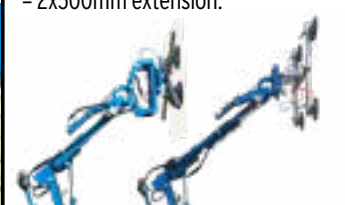
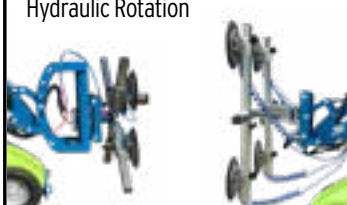

Therefore, we have made it possible to choose between different options within the following four configuration groups: **Wheels, Lifting arm, Front and Control System.**

Our experts are ready to guide you in finding the right model for your projects.



# Winlet 400

NB! Please see our separate brochure for detailed information on each Winlet 400 model

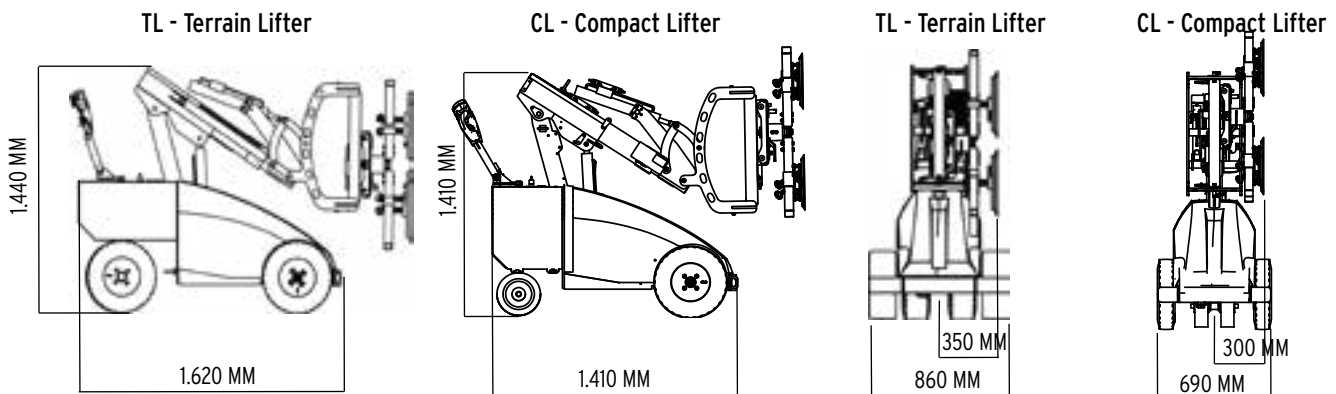
<p><b>WHEELS</b>          CL (Compact Lifter) = Narrow wheels          TL (Terrain Lifter) = Wide wheels</p> 	<p><b>LIFTING ARM</b>          SHB (Single Hydraulic Boom) = 1x500mm extension.          DHB (Double Hydraulic Boom) = 2x500mm extension.</p> 	<p><b>FRONT</b>          HV = Hydraulic Vertical lift          HS = Hydraulic Side shift          HS/HR = Hydraulic Side shift and Hydraulic Rotation</p> 	<p><b>CONTROL SYSTEM</b>          PSAC = Proportional Single Axis Control.          MAC = Multi Axis Control.          Radio Remote = Proportional Multi Axis Control.</p> 
---	---	--	--

## TECHNICAL OVERVIEW\*

MODEL	MAX LOAD ARM Out / In	MAX SIDE MOUNTED LOAD	MIN/MAX EXTENSION* (Bumper to suction cups)	MAX LIFTING HEIGHT (Vertical cups)	MIN/MAX LIFTING HEIGHT (Horizontal cups down)	MIN/MAX LIFTING HEIGHT (Horizontal cups up)	WEIGHT
Winlet 400CL SHB/HV	200 kg / 400 kg	200 kg	458 MM / 958 MM	2.663 MM	0 MM / 890 MM	2.670 MM / 3.078 MM	900 KG
Winlet 400CL DHB/HV	60 kg / 315 kg	200 kg	590 MM / 1.590 MM	3.190 MM	0 MM / 910 MM	2.790 MM / 3.635 MM	925 KG
Winlet 400CL SHB/HS	250 kg / 460 kg	200 kg	318 MM / 818 MM	2.575 MM	0 MM / 980 MM	2.530 MM / 2.938 MM	875 KG
Winlet 400CL DHB/HS	110 kg / 400	200 kg	450 MM / 1.450 MM	3.100 MM	0 MM / 1.065 MM	2.650 MM / 3.465 MM	900 KG
Winlet 400TL SHB/HV	225 kg / 410 kg	200 kg	458 MM / 958 MM	2.663 MM	0 MM / 890 MM	2.670 MM / 3.078 MM	912 KG
Winlet 400TL DHB/HV	85 kg / 345 kg	200 kg	590 MM / 1.590 MM	3.190 MM	0 MM / 910 MM	2.790 MM / 3.635 MM	937 KG
Winlet 400TL SHB/HS	285 kg / 500 kg	200 kg	318 MM / 818 MM	2.573 MM	0 MM / 1.192 MM	2.530 MM / 2.938 MM	887 KG
Winlet 400TL DHB/HS	130 kg / 415 kg	200 kg	450 MM / 1.450 MM	3.100 MM	0 MM / 1.065 MM	2.650 MM / 3.465 MM	912 KG
Winlet 400TL DHB/HS/HR	130 kg / 415 kg	200 kg	450 MM / 1.450 MM	3.100 MM	0 MM / 1.065 MM	2.650 MM / 3.465 MM	942 KG

## SPECIFICATIONS\*

SIDE SHIFT - 100% linear movements	100 MM	OPERATING HOURS - On fully charged batteries	12 HOURS
HYDRAULIC FINE LIFT - Only relevant on HV front	200 MM	MAX SPEED	0-5 KPH
ROTATION OF FRONT**	360 °	SUITABLE FOR OUTDOOR USE - Water resistant	YES
FRONT WHEEL DRIVE - 24V AC transaxle	1200 W	INTEGRATED LIFTING EYE - For lifting of the Winlet	YES
SUCTION CUPS	4 X Ø310 (Ø360 / Ø410 MM***)	BATTERIES	2 X 90 AH



\*The dimensions are indicative and may vary +/- 10mm. The photographs and/or drawings in this document are for illustrative purposes only.  
 \*\*Winlet 400TL DHB HS HR with hydraulic rotation  
 \*\*\*Optional



# Winlet 375

## Maximum capacity - minimum space

Winlet 375 combines superior lifting capacity and reach with a unique and compact design.

With Winlet 375, you can handle heavy elements up to 375 kg bringing them through rough terrain and narrow doorways.

Due to the compact design, confined spaces such as elevators and balconies are no problem for Winlet 375.

## Low weight

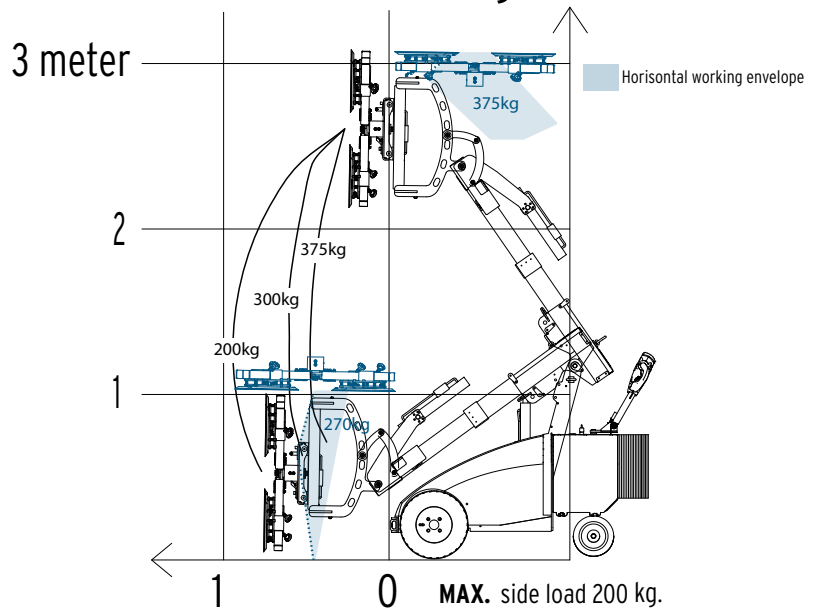
The low weight of Winlet 375 makes it possible to use it where heavier construction equipment cannot be used due to surface pressure.



# Winlet 375

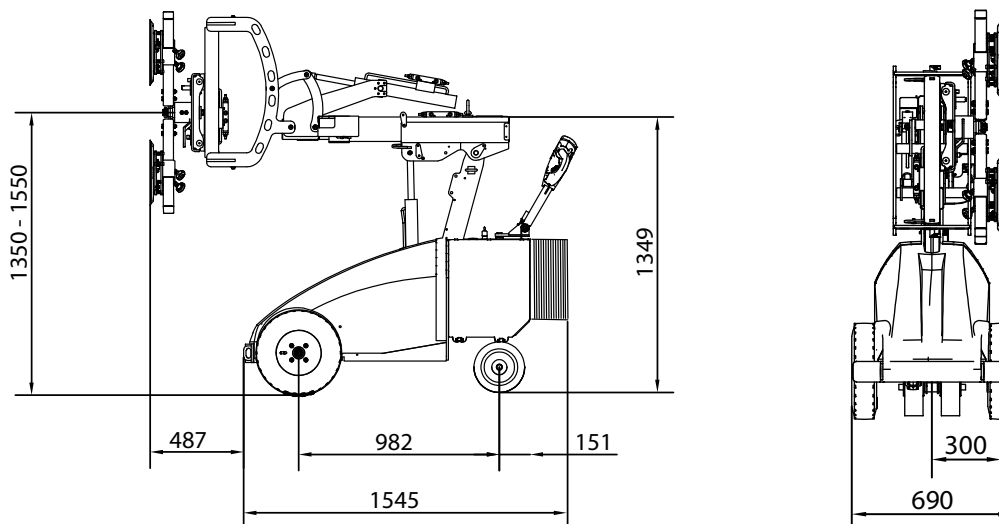


## WINLET 375 MAX. LOAD kg.



## SPECIFICATIONS\*

EXTERNAL LENGTH	1.545 MM	HYDRAULIC FINE LIFT ON ARM	200 MM
WIDTH - Single mounted tires	690 MM	TILT FUNCTION OF FRONT - Horizontal arm	BACK: 45° FORTH: 97°
WIDTH - Twin mounted tires	920 MM	ROTATION	ENDLESS
TOTAL WEIGHT - Excl. Counterweights	578 KG	SUCTION CUPS	4 X Ø310 MM (Ø360/Ø410 MM)**
TOTAL WEIGHT - Incl. Counterweights	732 KG	FRONT WHEEL DRIVE - 24v AC transaxle	1200W
MAX LOAD ARM IN/OUT	375 KG/ 200 KG	MAX SPEED	0-5 KPH
MAX SIDE MOUNTED LOAD	200 KG	BATTERIES	2 X 90 AH
EXTENSION MIN/MAX - Front bumper to suction cup	487 MM / 958 MM	OPERATING HOURS- On fully charged batteries	12 HOURS
LIFTING HEIGHT MIN/MAX - Horizontal cups down	0 MM / 890 MM	SUITABLE FOR OUTDOOR USE- Water resistant	YES
LIFTING HEIGHT MIN/MAX- Horizontal cups up	2.670 MM / 3.078 MM	INTEGRATED LIFTING EYE- For lifting of the Winlet	YES
MANUAL SIDE SHIFT	100 MM		



\*The dimensions are indicative and may vary +/- 10mm. The photographs and/or drawings in this document are for illustrative purposes only.

\*\*Optional

A blue and green Winlet Lasius 1,5t crane is shown in a side profile. It has a long, telescopic boom extending upwards and to the right, ending in a hook. The base is a small, three-wheeled vehicle with a battery pack on top. The background is a grey corrugated metal wall.

1.500 KG LIFTING CAPACITY  
POWER ASSISTED STEERING

### Lasius...?

Lasius is the Latin name of a species of ant. Ants are small, can get through the smallest passages and despite their size, are very strong and can carry an impressive load. Winlet Lasius has the same characteristics - hence the name.



# Winlet Lasius 1,5t

## Winlet Lasius - with even more lifting capacity

We have upgraded our traditional Winlet Lasius with an impressive lifting capacity of up to **1.500 kg**. Besides optimizing on lifting capacity, we have also given the Winlet Lasius 1,5t more reach and maneuverability (power assisted steering).

This will give the traditional crane and handling solutions even more competition.

Winlet Lasius 1,5t is ideal for:

- Erecting steel beams and other building elements
- Glass and facade installation
- Machine assembly
- Repair work
- Packing of non-palletized goods in containers

As the traditional Winlet Lasius, the 1,5t version runs with a maximum permitted speed of 4.2 kph - double that of mini cranes on tracks for example. Neither does it need to be leveled by outrigger legs like most mini cranes.

Because the Winlet Lasius 1,5t is battery-powered and therefore does not emit harmful exhaust gases, it can be used indoors without causing environmental problems.

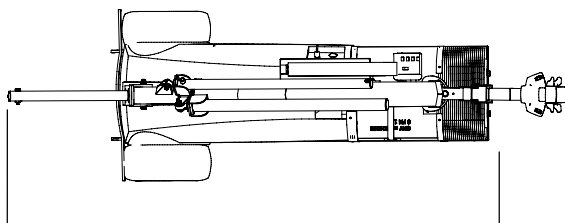
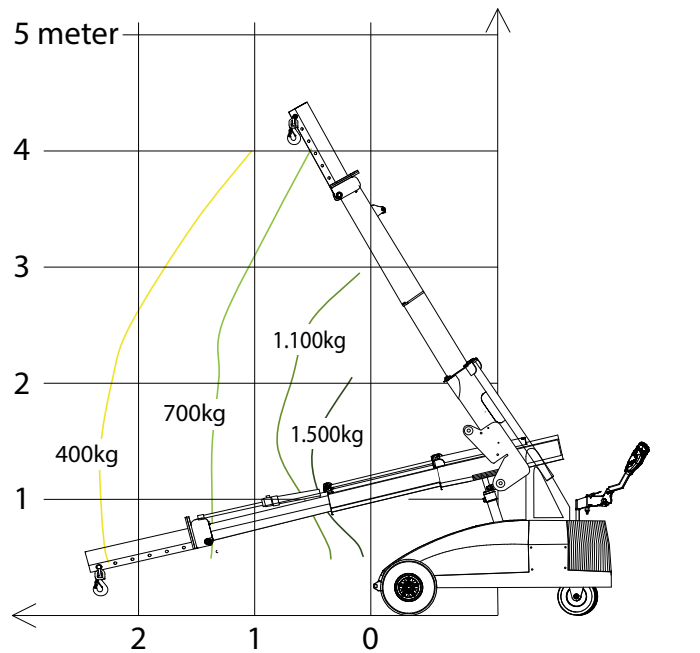


# Winlet Lasius 1,5t

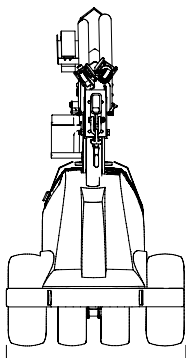
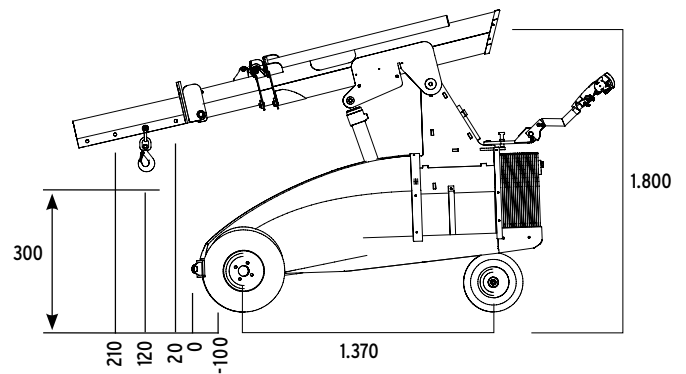
## SPECIFICATIONS\*

EXTERNAL LENGTH	2.420 MM
EXTERNAL WIDTH	880 MM
MAX LIFTING CAPACITY	1.500 KG
MAX LIFTING HEIGHT	4.240 MM
MAX SPEED	0-4.2 KPH
TOTAL WEIGHT excl. counterweights	1.082 KG
TOTAL WEIGHT incl. counterweights	1.535 KG
BATTERIES	2 x 150 AH
OPERATING HOURS - On fully charged batteries	12 HOURS
CHARGING TIME	8-10 HOURS

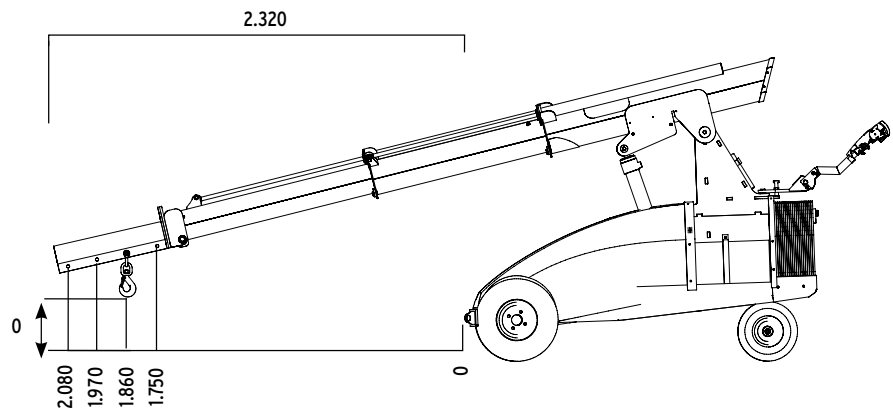
## LIFTING DIAGRAM MAX. LOAD 1.500 KG



2420



880



\* The dimensions are indicative and may vary +/- 10mm. The photographs and/or drawings in this document are for illustrative purposes only.

## Lasius...?

Lasius is the Latin name of a species of ant. Ants are small, can get through the smallest passages and despite their size, are very strong and can carry an impressive load. Winlet Lasius has the same characteristics - hence the name.



# Winlet Lasius 1t

## New opportunities - new savings

Winlet Lasius 1t gives traditional crane and handling solutions tough competition. Its unique performance results in remarkable savings in both time and invested capital.

Winlet Lasius 1t is ideal for:

- Erecting steel beams and other building elements
- Glass and facade installation
- Machine assembly
- Repair work
- Packing of non-palletized goods in containers

The compact design makes it possible to reach where other heavier and bigger machines cannot due to their physical size, surface pressure, turning radius or low lifting capacity.

Winlet Lasius 1t runs with a maximum permitted speed of 4.2 kph - double that of mini cranes on tracks for example. Neither does it need to be leveled by outrigger legs like most mini cranes.

Because the Winlet Lasius 1t is battery-powered and therefore does not emit harmful exhaust gases, it can be used indoors without causing environmental problems.



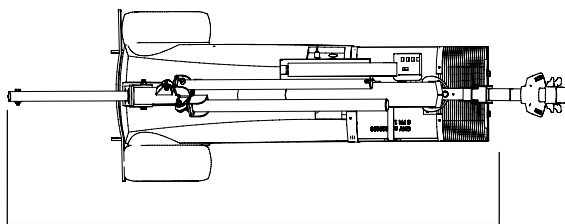
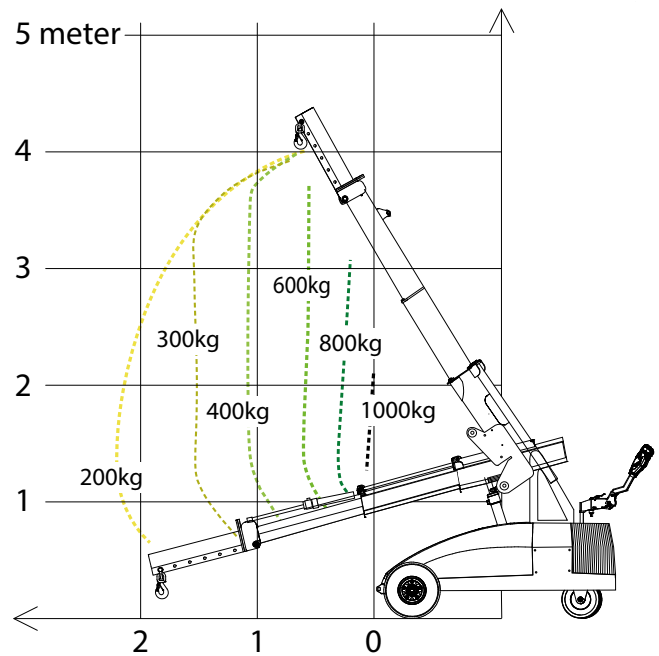


# Winlet Lasius 1t

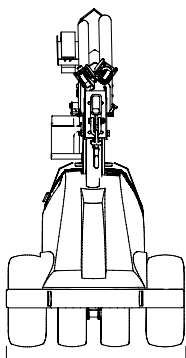
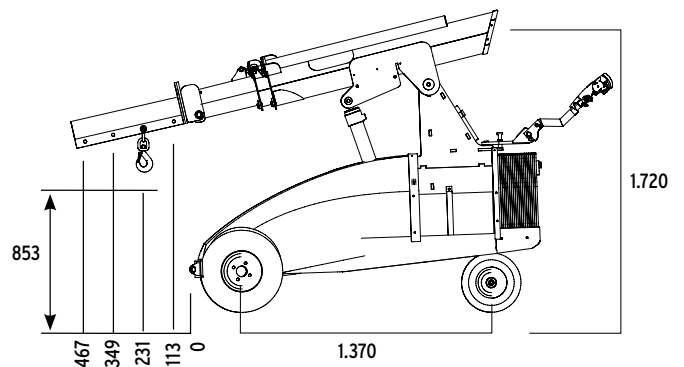
## SPECIFICATIONS\*

EXTERNAL LENGTH	2.500 MM
EXTERNAL WIDTH	880 MM
MAX LIFTING CAPACITY	1.000 KG
MAX LIFTING HEIGHT	4.000 MM
MAX SPEED	0-4.2 KPH
TOTAL WEIGHT excl. counterweights	1.050 KG
TOTAL WEIGHT incl. counterweights	1.325 KG
BATTERIES	2 x 150 AH
OPERATING HOURS - On fully charged batteries	12 HOURS
CHARGING TIME	8-10 HOURS

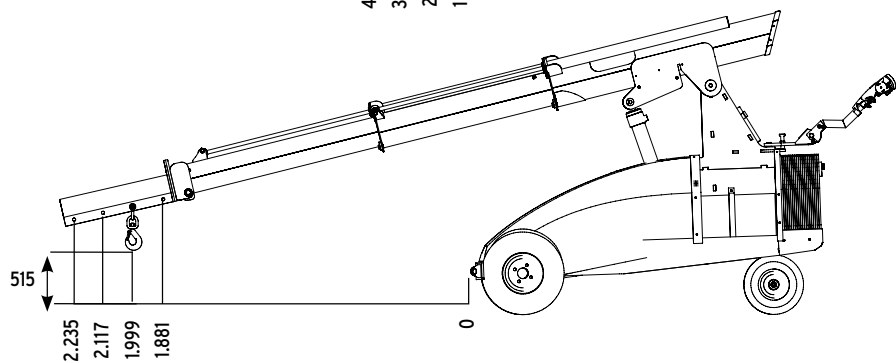
## LIFTING DIAGRAM MAX. LOAD 1.000 KG



2500



880



\* The dimensions are indicative and may vary +/- 10mm. The photographs and/or drawings in this document are for illustrative purposes only.

## Lasius...?

Lasius is the Latin name of a species of ant. Ants are small, can get through the smallest passages and despite their size, are very strong and can carry an impressive load. Winlet Lasius has the same characteristics - hence the name.



# Winlet Lasius 550

## Compact Solution for Efficient Lifting

Looking for a Pick & Carry crane that packs power and efficient lifting into a smaller frame? Winlet Lasius 550 is the agile solution for tight spaces and efficient lifting needs. Designed to excel where larger cranes struggle.

### Compact Yet Mighty

With its compact design, the Winlet Lasius 550 navigates through narrow spaces with ease, making it the ideal choice for projects where maneuverability is key.

### Versatile Applications

Winlet Lasius 550 is ideal for:

- Installation of steel beams
- Glass and facade installation
- Machine assembly
- Repair work
- and much more.

### Time and cost savings

Its unique performance capabilities allow you to complete tasks faster and with greater precision, maximizing productivity and minimizing downtime.

### Environmental Friendly

Because the Winlet Lasius is battery-powered and therefore does not emit harmful exhaust gases, it can be used indoors without causing environmental problems.

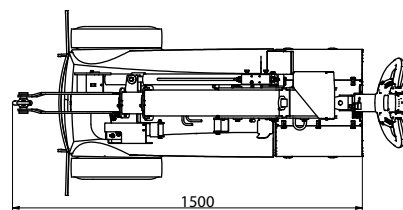
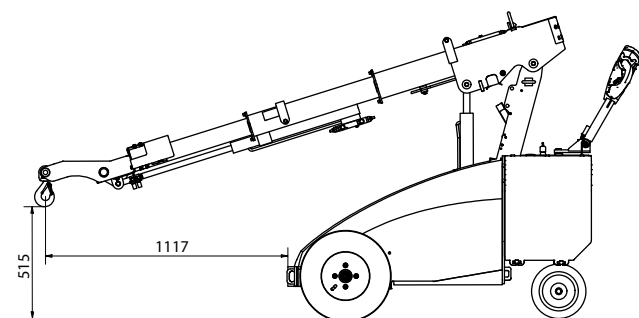
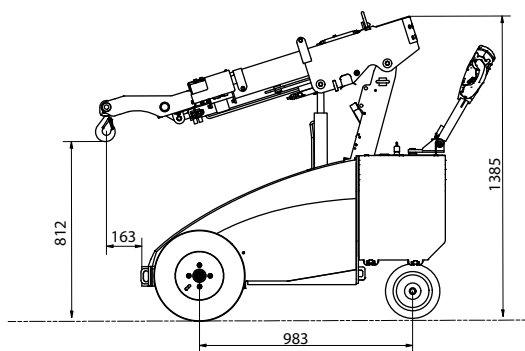
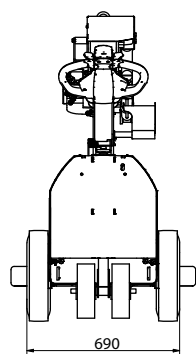
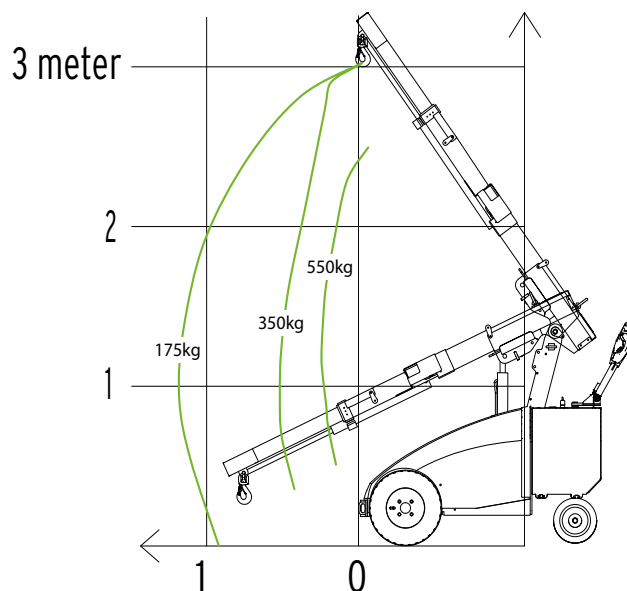


# Winlet Lasius 550

## SPECIFICATIONS\*

EXTERNAL LENGTH	1.500 MM
EXTERNAL WIDTH	690 MM
MAX LIFTING CAPACITY	550 KG
MAX LIFTING HEIGHT	3.000 MM
MAX SPEED	0-4.2 KPH
TOTAL WEIGHT	770 KG
BATTERIES	2 x 90 AH
OPERATING HOURS - On fully charged batteries	12 HOURS
CHARGING TIME	8-10 HOURS

## WINLET LASIUS 550 MAX. LOAD kg.



\* The dimensions are indicative and may vary +/- 10mm. The photographs and/or drawings in this document are for illustrative purposes only.

# Winlet - Superior usability



## User friendly operating panels of your choice

Choose between three different types of operating panels for your Winlet:

1. **MAC (Multi Axis Control)**, which allows controlling of more hydraulic functions at a time. The operator can adjust the speed at the levels: 10 % - 50 % - 100 %.\*
2. **PSAC (Proportional Single Axis Control)**, the traditional Winlet controls, where one function is operated at a time step-less.
3. **Radio Remote**, cable free proportional control of more hydraulic functions at a time.\*

All operating panels are waterproof, according to the IP65 regulations.

## Safety first!

All Winlets are equipped with a state-of-the-art overload monitoring system, which continuously measures the point loading on the steering wheels. If point loading is getting too low the system will automatically cut off the hydraulic functions and only allow hydraulic cylinders to bring the load closer to the machine.



\*Not available for Winlet 350TH, Winlet 375 and Winlet 600

# Winlet accessories



## Make the most of your Winlet

Winlet comes with a wide range of accessories. Here is a few of our most popular items:

- **LIFTING FORK & LIFTING HOOK**
  - for lifting of pallets or with straps
- **LIFTING SLING**
  - for lifting the Winlet by crane
- **SHUT-OFF VALVES**
  - on suction cups
- **QUICK CONNECTORS**
  - on suction cups or main supply
- **EXTENSION OF THE BEAMS**
  - customized cross - and main beams
- **RADIO REMOTE CONTROL**
- **QUICK SHIFT FOR TELEHANDLER**

Please consult our experts to find the right accessories for your project.



## Lifts all airtight material

All Winlet glazing robots can easily be adapted to lift a wide range of materials by changing the suction cups. This makes Winlet ideal when handling:

- |               |               |
|---------------|---------------|
| GRANITE       | WOODEN PLATES |
| CONCRETE      | TILES         |
| PLASTERBOARDS | FIRE DOORS    |
| STEEL PLATES  |               |



# With **GMV** you also get...



## Ergonomic and effective handling of plasterboards and other building materials with **ErgoMover**

ErgoMover is the original electric transport trolley designed to cope with heavy loads on site. The ErgoMover is designed to transport and handle full stacks of plasterboards and to transport all other building materials in spaces where it is not possible to use forklift trucks or other machines equipped with forks.

[www.ergomover.eu](http://www.ergomover.eu)



# With **GMV** you also get...



## **GMVs Handling products** designed to assist manual heavy lifting in the industry

GMV assists manual heavy lifting in all industries. We either base our solutions on products from the many foreign manufacturers for which we act as dealers or on our own products developed in-house from our vast experience gained over more than 30 years. When a standard solution does not match the specific task, our engineering team will design a customized solution in consultation with the customers.

[www.handlingproducts.dk](http://www.handlingproducts.dk)



The company GMV A/S was founded in 1988. In 2008, the company was taken over by Jesper Faurskov and Erik Pedersen. The vision of GMV is:

*GMV must be at the cutting edge of market needs and match these needs by developing unique technical solutions which aid heavy manual lifting in a modern design.*

#### **A HEALTHY WORKING ENVIRONMENT MEANS HAPPY EMPLOYEES**

GMV provides solutions for heavy manual lifting for the building and manufacturing industries.

#### **CONSULTING, ENGINEERING, AND PLANNING**

We are with you from start to finish. We provide qualified advice and listen to your needs.

#### **THE MARKETS BEST SOLUTIONS AND PRODUCT BRANDS**

We provide innovative solutions that suit your needs.

#### **LOCAL COMPANY WITH GLOBAL SALES**

With our strong dealer network, we sell products worldwide.

#### **EDUCATION AND SERVICE**

Our highly trained experts guide and instruct distributors and end users.

#### **ASSEMBLY AND MAINTENANCE CHECK**

Our strong team is responsible for assembly and service, both locally and internationally.

#### **PRODUCT DEVELOPMENT**

GMV develops products from scratch. Focus is always on providing a good working environment.

#### **MODERN INDUSTRIAL DESIGN**

Our award-winning Danish design is combined with unique technical solutions for both the building and manufacturing industries.

#### **DANISH PRODUCTION LINE ACCORDING TO EUROPEAN STANDARDS**

We have our own local production and use local suppliers. This ensures local jobs and high quality.

#### **THOROUGH FACTORY TESTING AND DOCUMENTATION**

All our products undergo rigorous testing before leaving the factory and comprehensive technical documentation always accompanies our products.

#### **TRAINING FOR SERVICE TECHNICIANS**

To ensure that our products will last as long as possible and that local laws are respected, we conduct thorough training with your service technicians - both nationally and internationally.



**GMV A/S**  
Tlf: +45 7573 8247  
E-mail: [post@gmvas.dk](mailto:post@gmvas.dk)  
Industriparken 1  
DK - 7182 Bredsten